

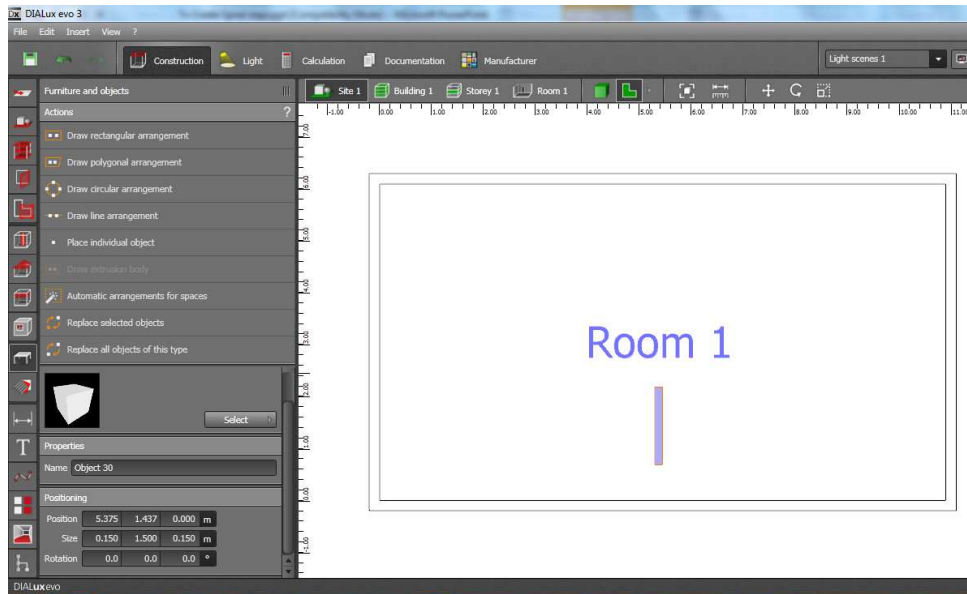
Lighting Design Tip

Topic: How to create spiral steps

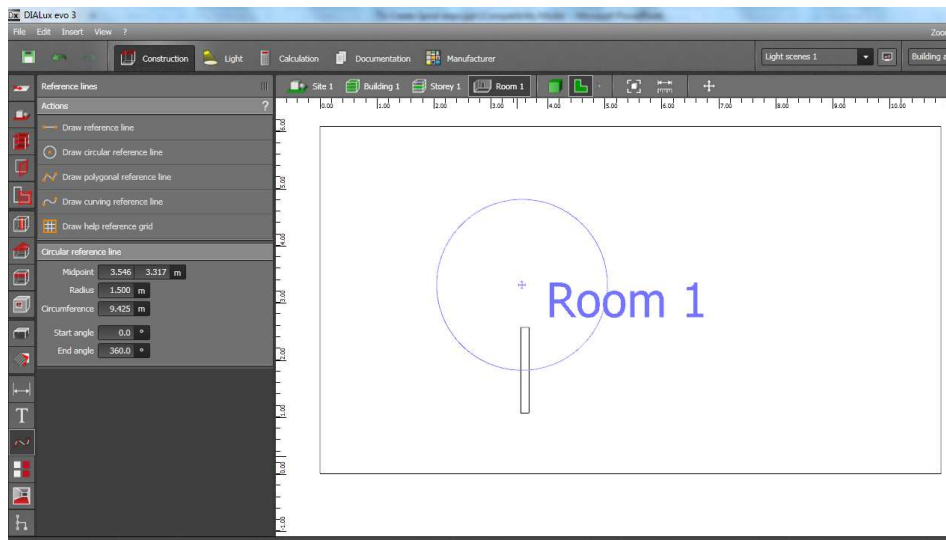
By: Premkumar Srinivas

- 1) Create a basic room and insert an object

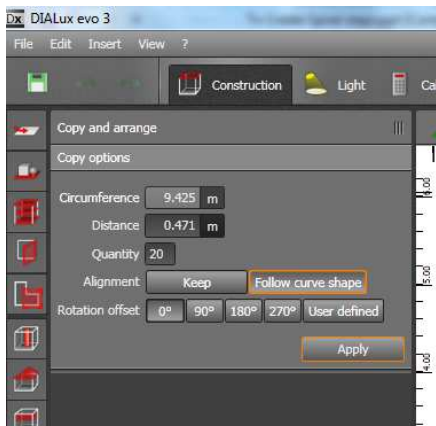
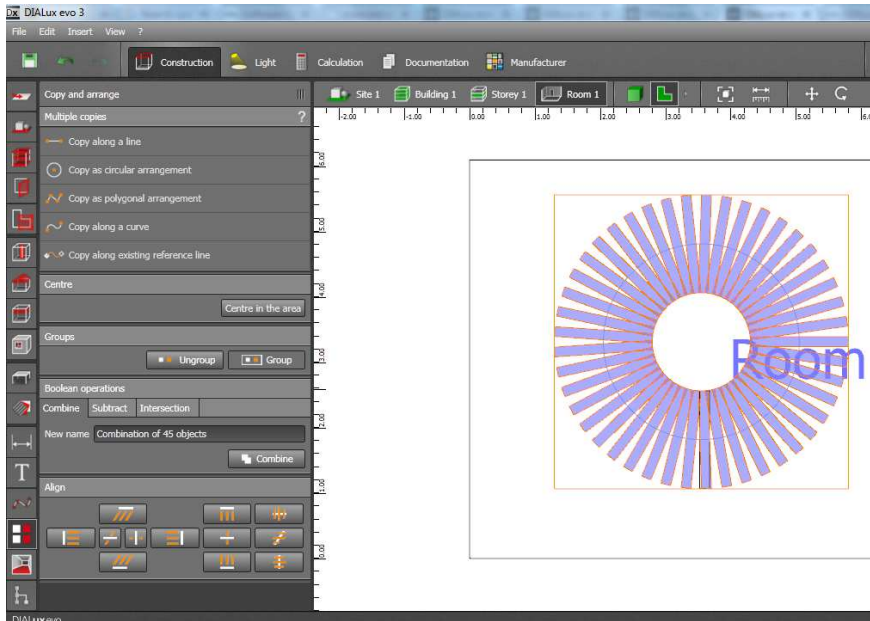
Object dimension – L=1.5m,Width=0.15m and height = 0.15m



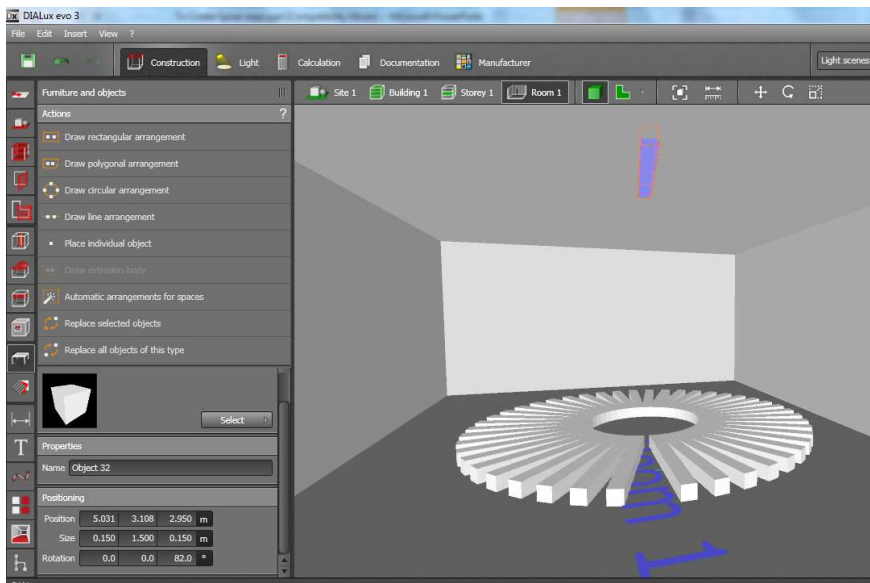
- 2) Draw a reference circle as a background (to draw circle refer the line lkon on the left corner)



- 3) Select object with help of copy along existing reference line command and create multiple copy . Then select follow curve shape tab and click apply



4) Select any one object and assign z position @ 2.85m (or based on your required level)



5) This is final command which creates the spiral shape – select distribute evenly tab on align window.

Thus the spiral steps are created.

